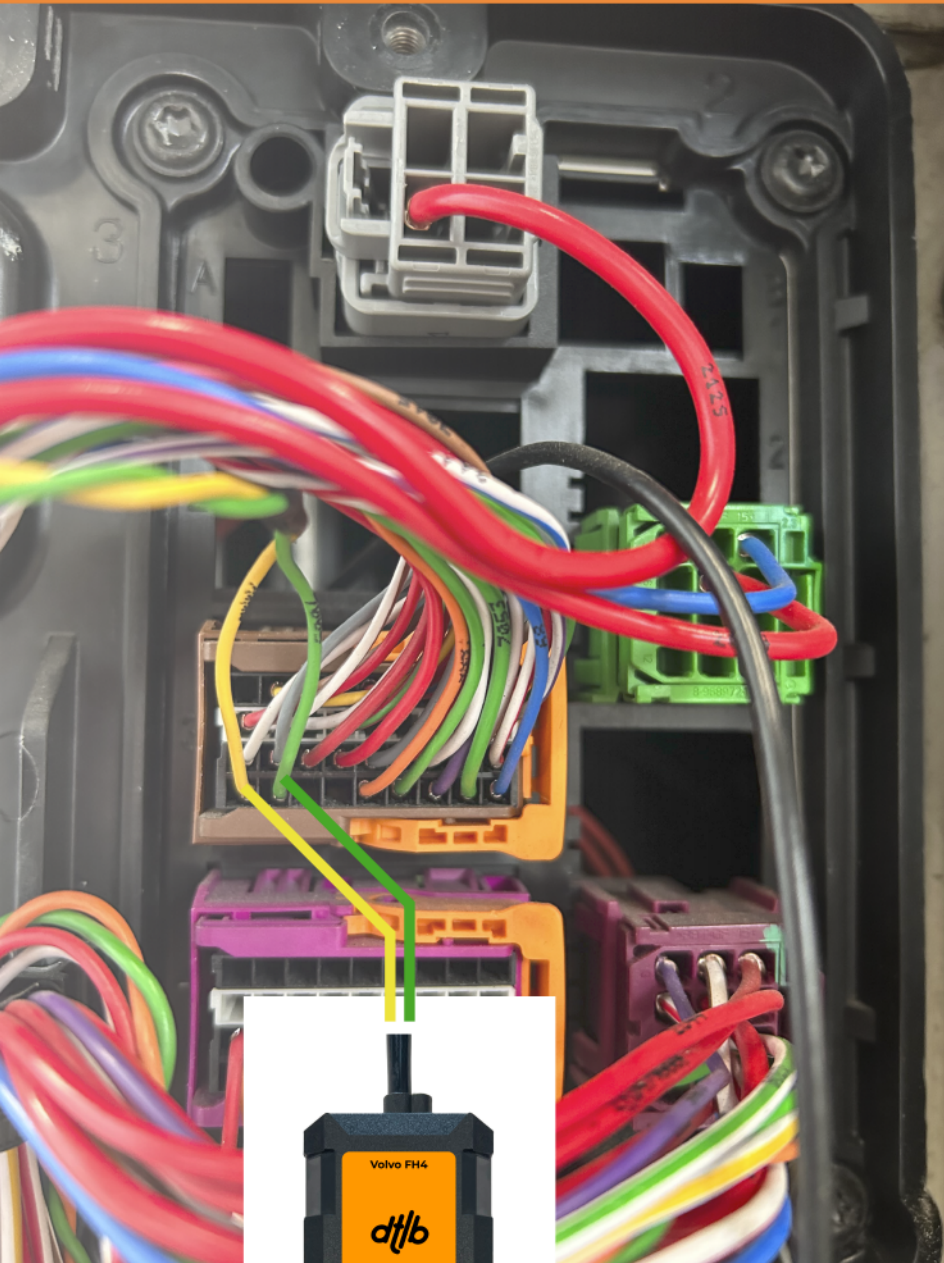




VOLVO FH4 INSTALLATION GUIDE

dtlb.com.tr



STEP 1

CONNECT EMULATOR UNDER HOOD
IN THE SOCKET BOX LOCATED
AT THE PASSENGER SIDE



**YELLOW TO YELLOW
(WIRE 7004, PIN 1,
SOCKET XC203)**

**GREEN TO GREEN
(WIRE 7005, PIN 2,
SOCKET XC203)**



STEP 2

CONNECT POWER OF EMULATOR

RED TO RED
(WIRE 2086, PIN 35,
SOCKET XC203)

BROWN TO WHITE
(WIRE 7056, PIN 10,
SOCKET XC203)

dtlb.com.tr



STEP 3

STRETCH THE LONG

CABLE TO THE

SOCKET XC302

LOCATED IN THE FRAME

STEP 4

CONNECT IN THE
XC302 SOCKET

dtlb.com.tr

IF PINS 34 AND 36 IN THE XC302 SOCKET BUSY – CONNECTING HERE (FOR EURO5 TRUCKS)
GRAY FROM EMULATOR TO PIN 34 (WIRE 7038, COLOR DOESN'T MATTER)
ORANGE FROM EMULATOR TO PIN 36 (WIRE 7039, COLOR DOESN'T MATTER)

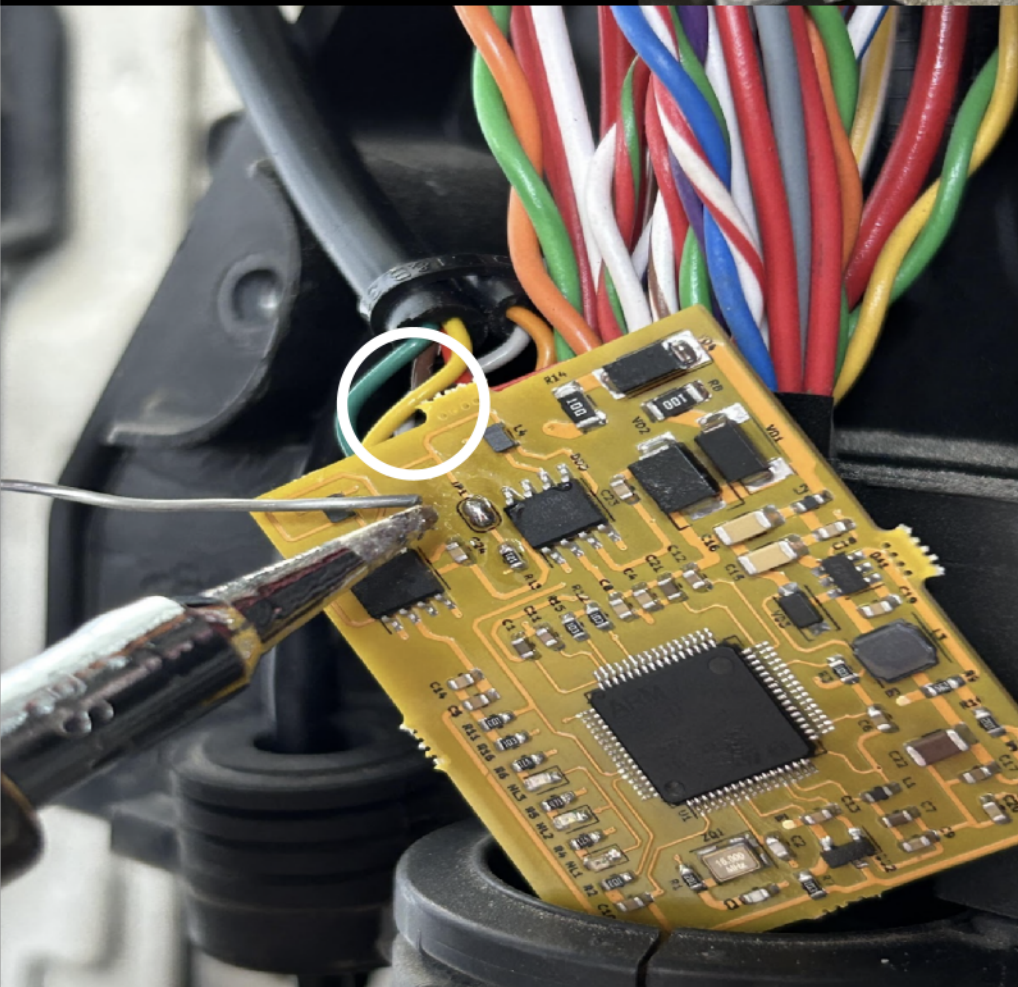
LONG CABLE
FROM EMULATOR

PIN 34

PIN 36

STEP 5

SWITCH ON IGNITION AND
CHECK MODE OF LEDS
ON THE EMULATOR.
IF RED LED STARTING FLASH:
MEANS TRUCK HAS RETARDER.
IN THIS CASE NEED TO SOLDER
PADS ON THE EMULATORS PCB



STEP 6

DISCONNECT POWER AND CAN BUS

(IF RETARDER VERSION) IN THE ACM SOCKET LOCATED AT
MIDDLE OF THE FRAME



CUT WIRE 2161 PIN 49

CUT WIRE 7039 PIN 1

ACM MODULE

CUT WIRE 7038 PIN 5