



## DAF F7 EAS4 INSTALLATION GUIDE

### STEP 1

REMOVE RIGHT WHEEL COVER

### STEP 2

REMOVE BACK COVER OF THE SOCKET 152F

### STEP 3

CONNECT CAN BUS FROM EMULATOR

YELLOW TO PINK (3367) PIN 11 IN SOCKET 152F

GREEN TO YELLOW (336) PIN 12 IN SOCKET 152F

### STEP 4

CONNECT POWER OF EMULATOR

RED TO RED (1413) PIN 3 IN SOCKET 152F

BROWN TO WHITE (9113) PIN 13 IN SOCKET 152F

### STEP 5

REMOVE FUSES E497 (F22) AND

E443 (D26 IN THE FUSES BOX IN THE CABIN)

[dtlb.com.tr](http://dtlb.com.tr)



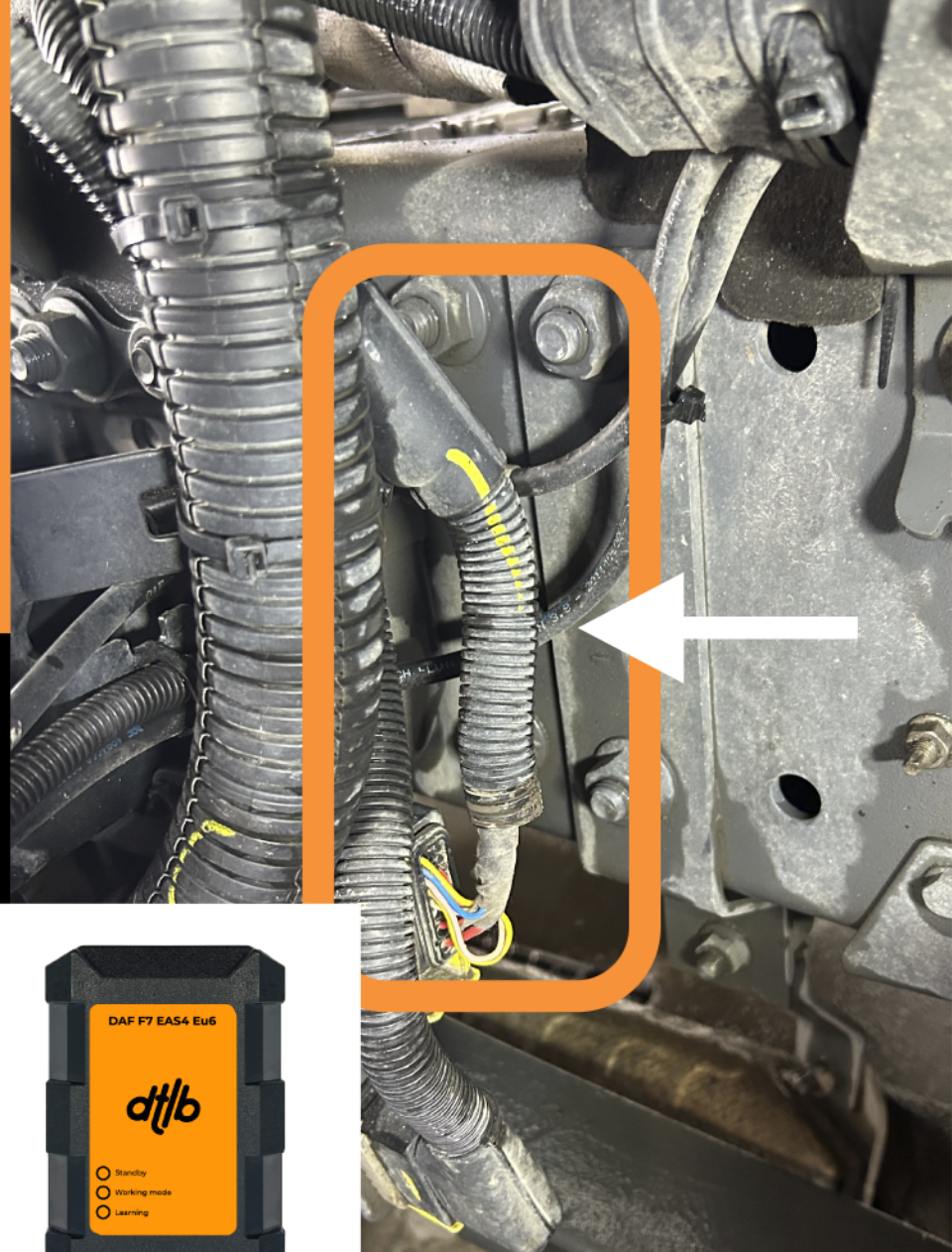
## STEP 1

**REMOVE  
RIGHT  
WHEEL  
COVER**

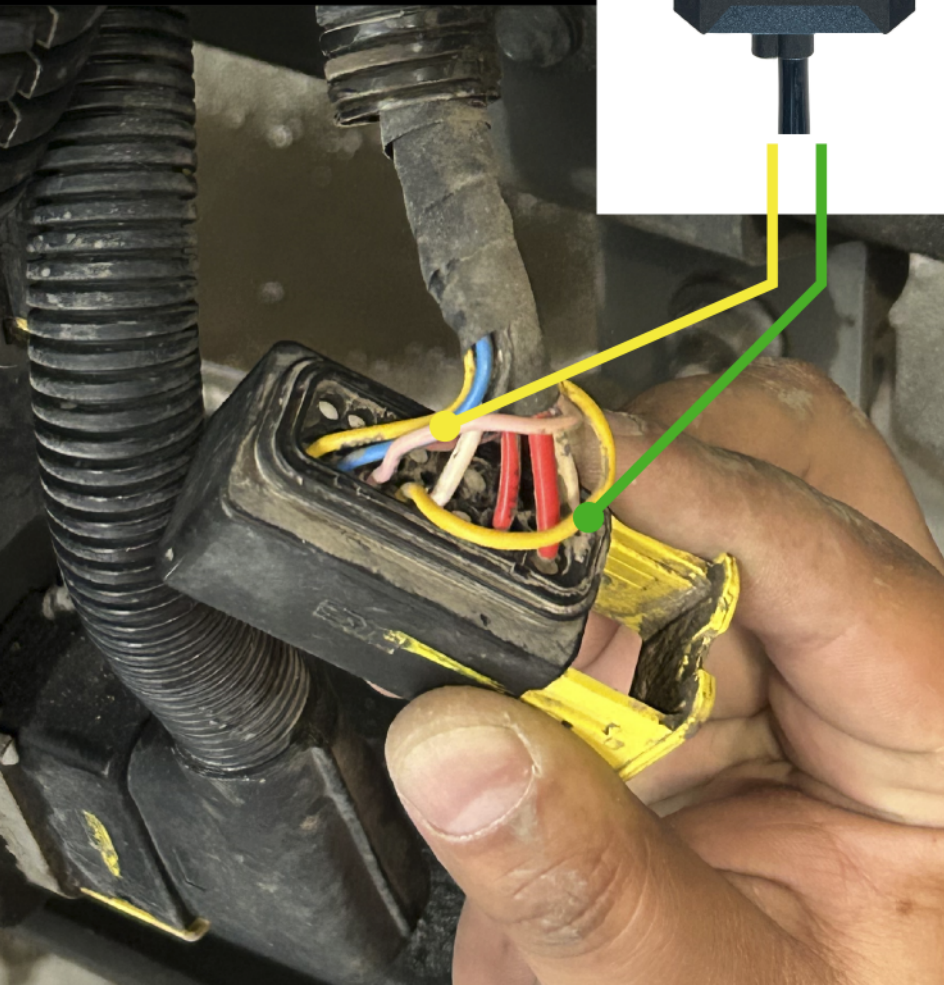
# STEP 2

[dtlb.com.tr](http://dtlb.com.tr)

**REMOVE BACK  
COVER OF THE  
SOCKET 152F**



**STEP 3  
CONNECT CAN BUS  
FROM EMULATOR**



**YELLOW TO PINK (3367)  
PIN 11 IN SOCKET 152F**

**GREEN TO YELLOW (336)  
PIN 12 IN SOCKET 152F**



# STEP 4

CONNECT POWER OF EMULATOR

RED TO RED (1413)  
PIN 3 IN SOCKET 152F

BROWN TO WHITE (9113)  
PIN 13 IN SOCKET 152F

[dtlb.com.tr](http://dtlb.com.tr)



# STEP 5

REMOVE FUSES

1: E497 (F22)

AND

2: E443

(D26 IN THE FUSES BOX

IN THE CABIN)

